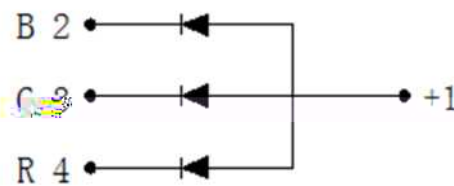
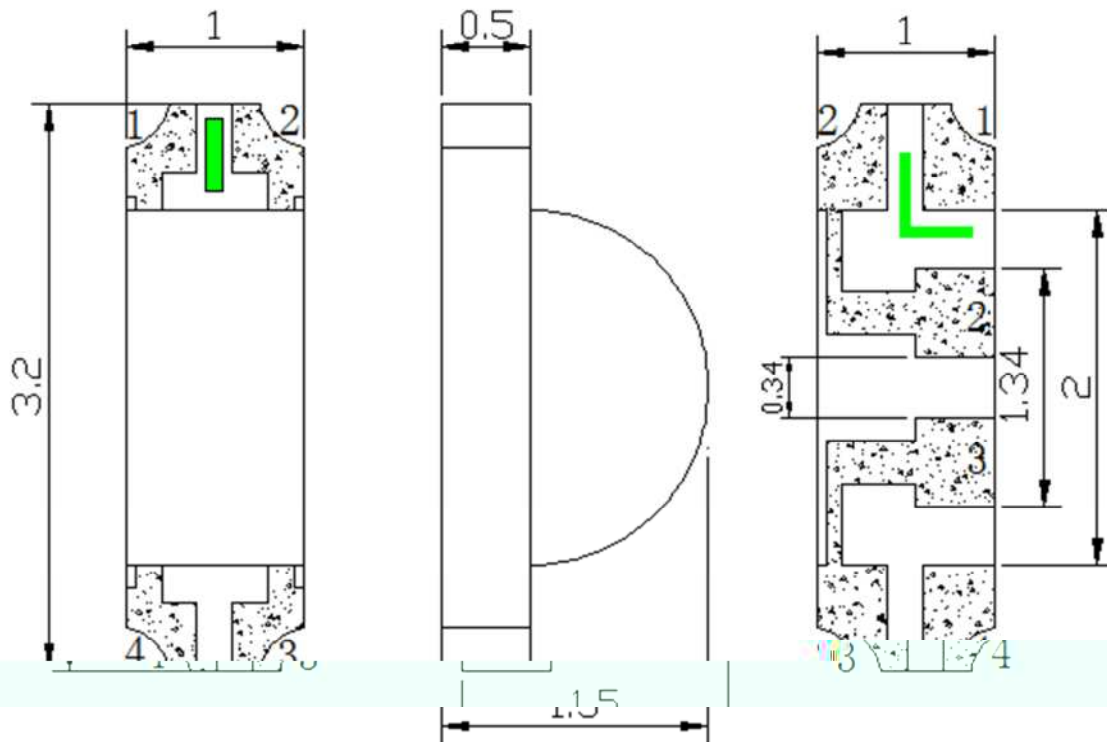


Features

- ◆ Pb free product—RoHS compliant
- ◆ Low power consumption, High efficiency
- ◆ Reliable and rugged
- ◆ High luminous intensity
- ◆ Long life – solid state reliability
- ◆ Viewing angle: 120°(R/G/B)

Package Dimension



Part No.	Lens Color	Source Color
SL-T3210RGBC020-L150	Water Clear	Red/Green/Blue

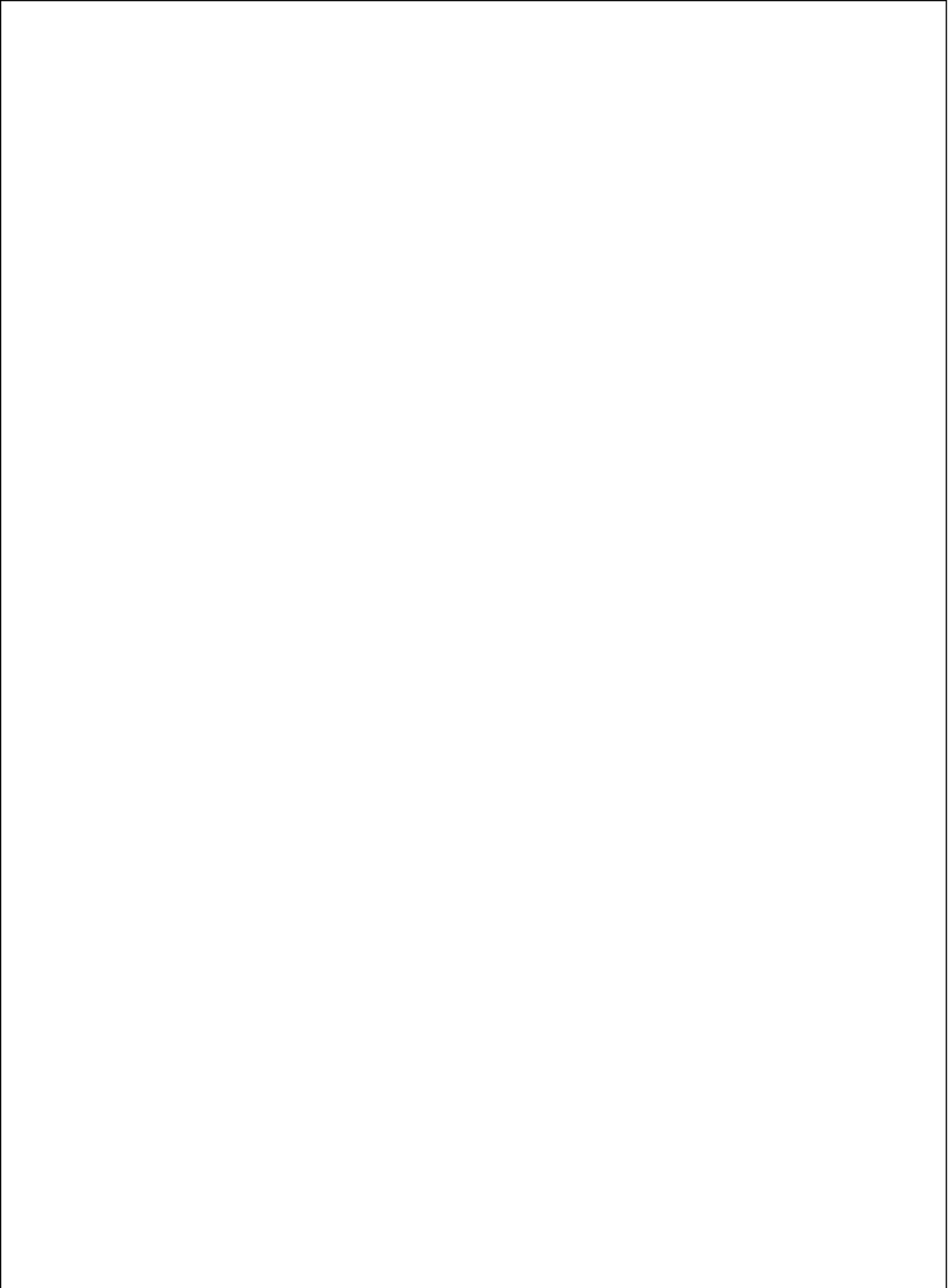
Notes:

1. All dimensions are in millimeters.
2. Tolerance is $\pm 0.10\text{mm}$ unless otherwise noted.
3. Specifications are subject to change without notice.



LIGH

LIGHT ELECTRONICS CO., LTD.

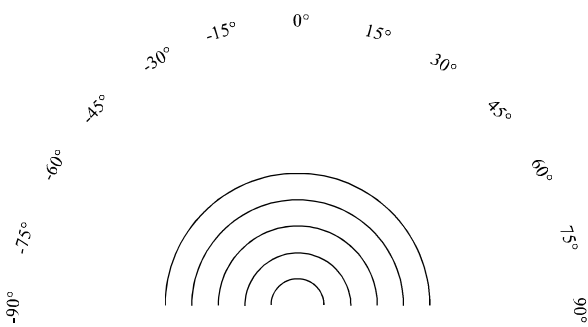


--	--	--	--

--	--

--

--

 <p>The diagram shows a semi-circular arc with concentric lines inside it. The arc is divided into segments by degree markings: -90°, -75°, -60°, -45°, -30°, -15°, 0°, 15°, 30°, 45°, 60°, 75°, and 90°.</p>

--

--	--	--	--

Label Explanation

LIGHT
Light Electronics CO., LTD.

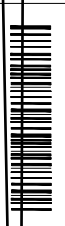
MODEL NAME: _____

QUANTITY: _____

BIN: _____

PACKING DATE: _____

REMARKS: _____

LOT NO. : 

LIGHT
Light Electronics CO., LTD.


MODEL NAME: _____

QUANTITY: _____

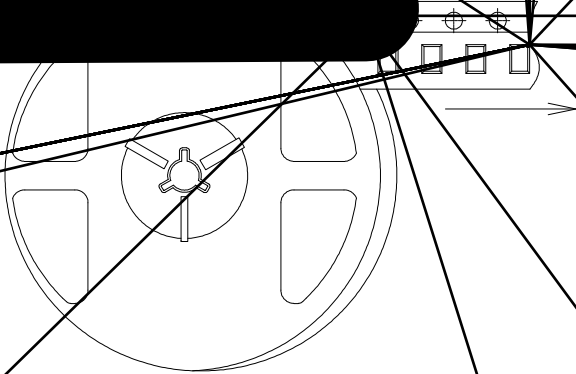
BIN: _____

PACKING DATE: _____

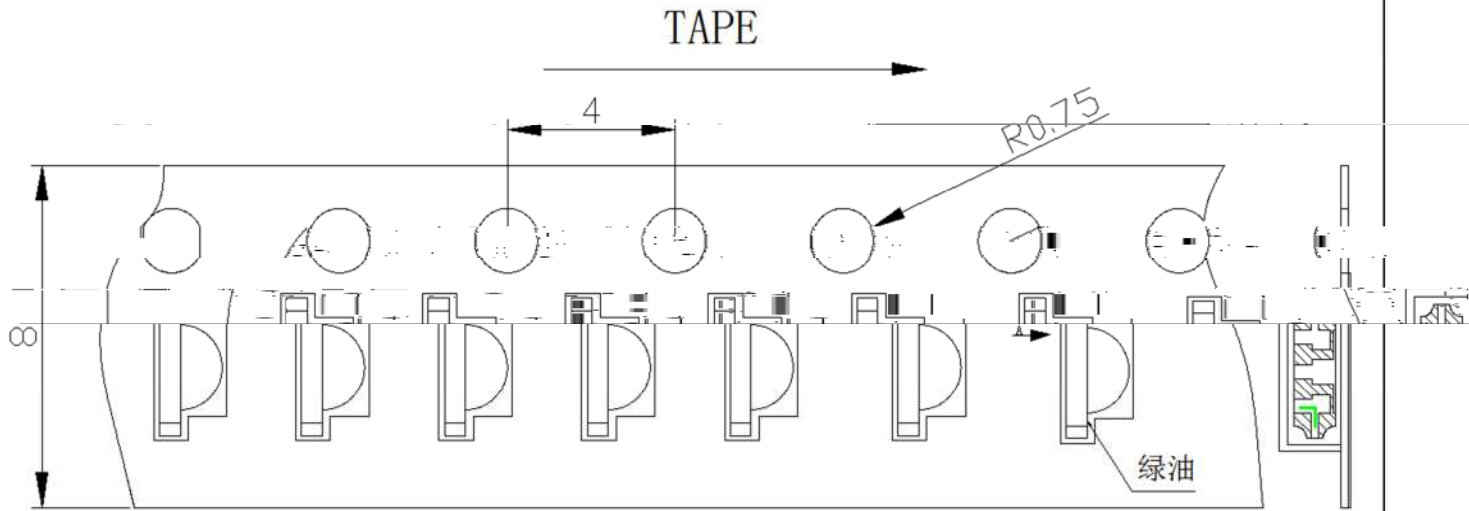
CUSTOMER P/N: _____

LOT NO. : 

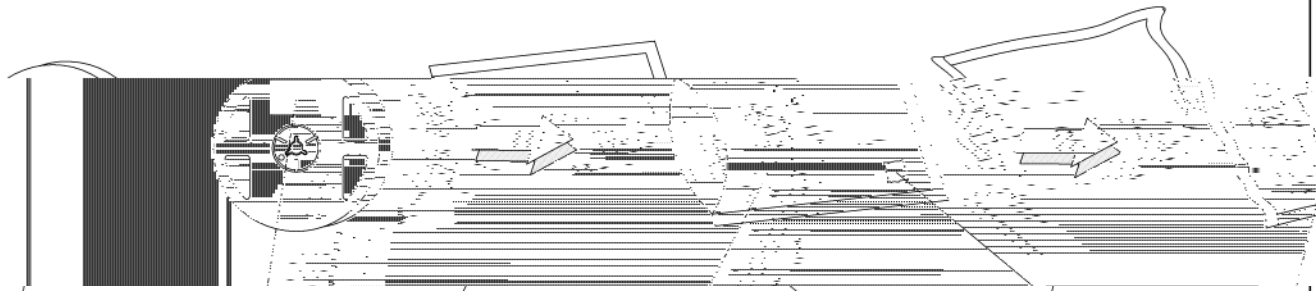
Reel Dimensions



Carrier Tape Specifications (Loaded Quantity: 3000pcs/reel)



Moisture Resistant Packaging



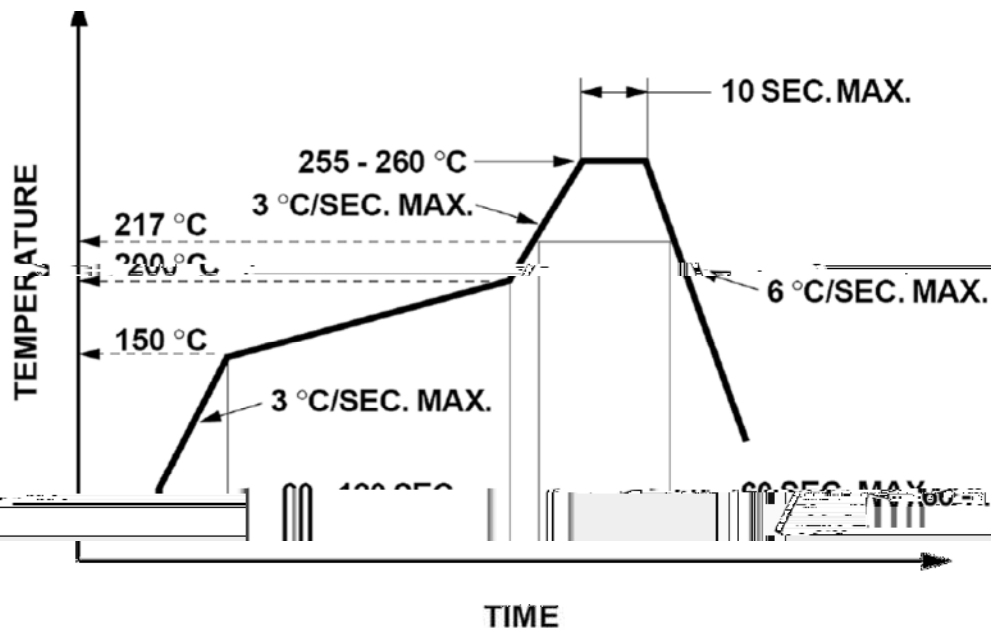
LIGHT universal...
Label

Aluminum moisture-proof bag

Desiccant

Customer defined
Label or LIGHT
universal Label

Suggest IR Reflow Condition For Lead Free



1. Reflow soldering should not be done more than two times.
2. When soldering, do not put stress on the LEDs during heating.

Soldering iron

1. When hand soldering, the temperature of the iron must less than 300 °C for 3 seconds.
2. The hand solder should be done only once.

Repairing

Repair should not be done after the LEDs have been soldered. When repairing is unavoidable, a double-head soldering iron should be used (as below figure). It should be confirmed beforehand whether the characteristics of LEDs will or will not be damaged by repairing.

