

LG-T1921RGBA-TD-AL

DATA SHEET

SPEC. NO. : SZ22101501
DATE : 2022/10/15
REV. : A/0

Approved By:

Checked By:

Prepared By:



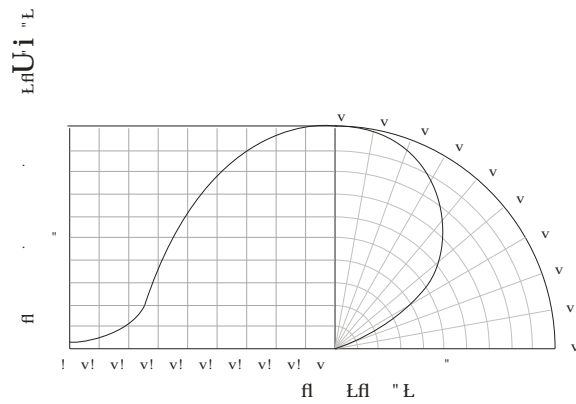
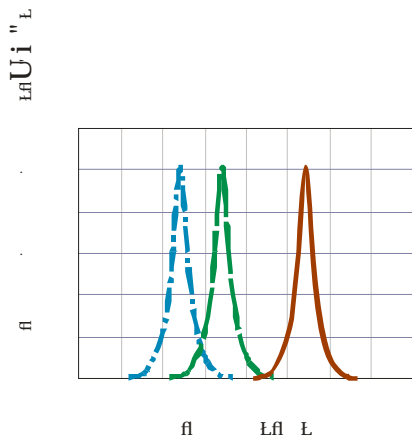
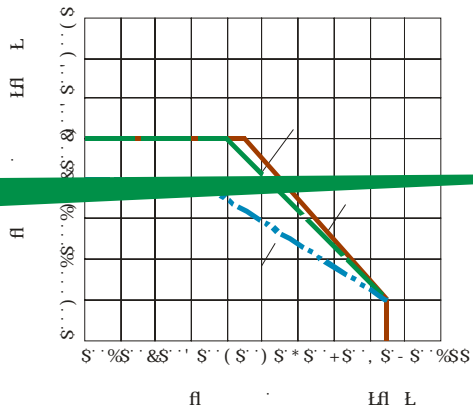
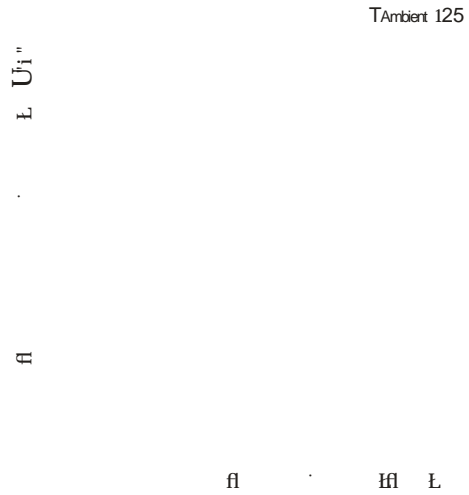
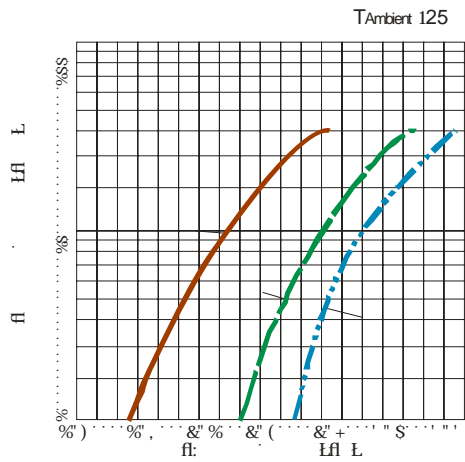
LG-T1921RGBA-TD-AL

TOP Full-color LED

Catalogue

Electrical Characteristics.....3

Typical Characteristics Curves



Reliability Test Items And Conditions

实验项目	参考标准	实验条件	时间	样品数	判据
		↔			

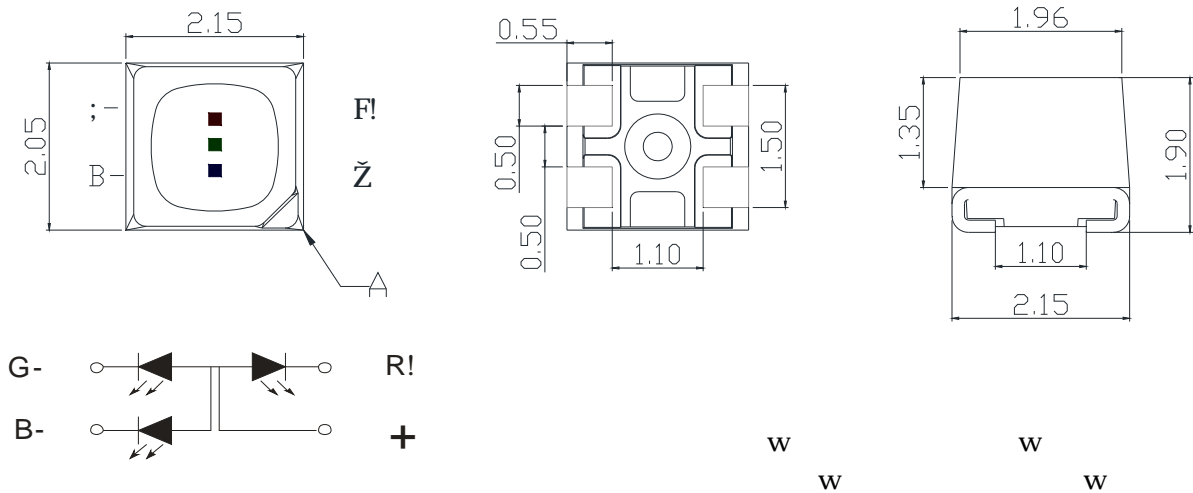
Criteria For Judging Damage

测试项目	符号	测试条件	判定标准
			μ
			≧ ≦

Product design and operational recommendation

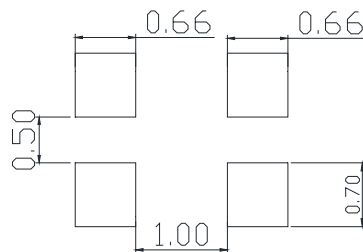
1 mm

Product design Unit: mm



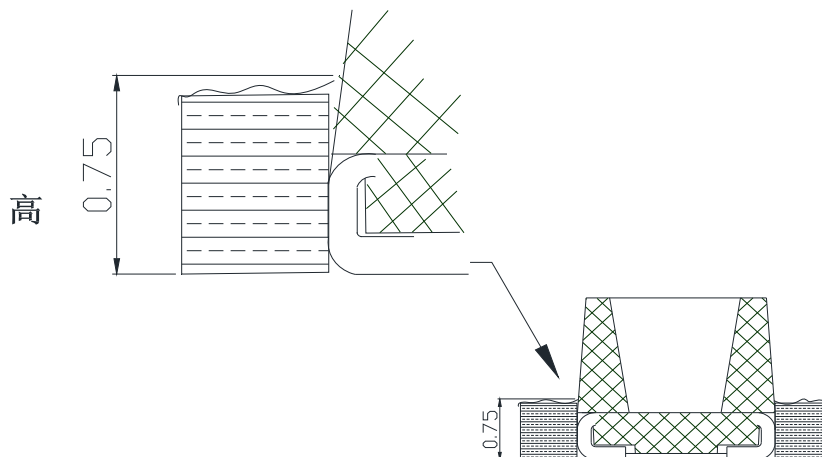
2 mm

Recommended soldering pad (Unit: mm)



3 0.75mm

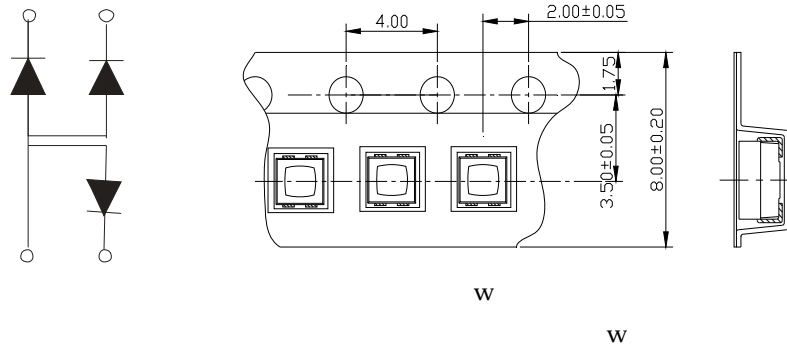
Recommendation for glue filling: filling height must be higher than or equal to 0.75mm



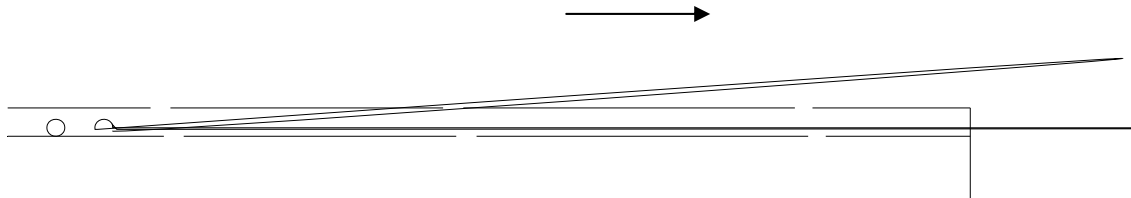
1

Packaging (1)

Carrier Tape



Details Of Carrier Tape



Reel Dimension



LIGHT

LIGHT ELECTRONICS CO., LTD.

LIGHT

LIGHT ELECTRONICS CO., LTD.

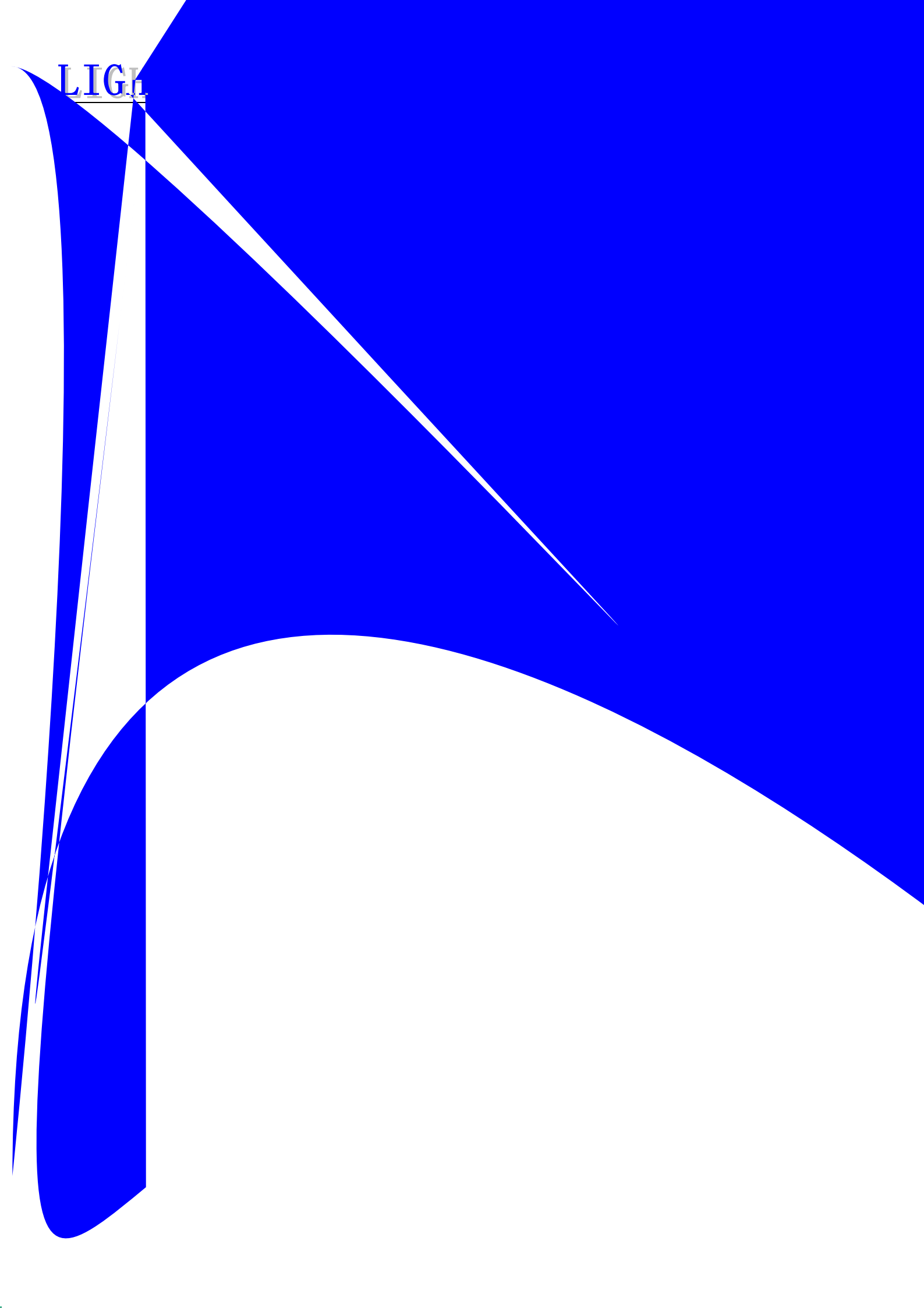
2



Guideline for Soldering (2)

- x .
- x .
- x .
- x .

LIGH



(2)

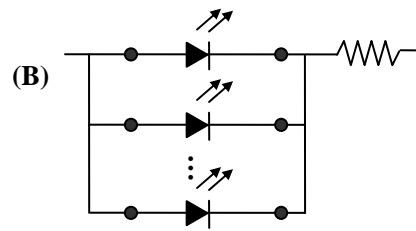
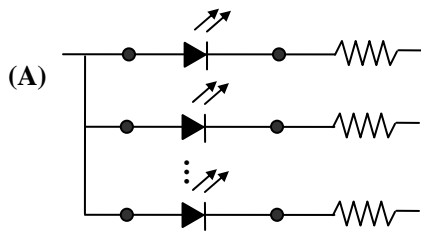
Precautions (2)

3.

Design Consideration

-

-



-

4.

Reverse voltage protection

-

