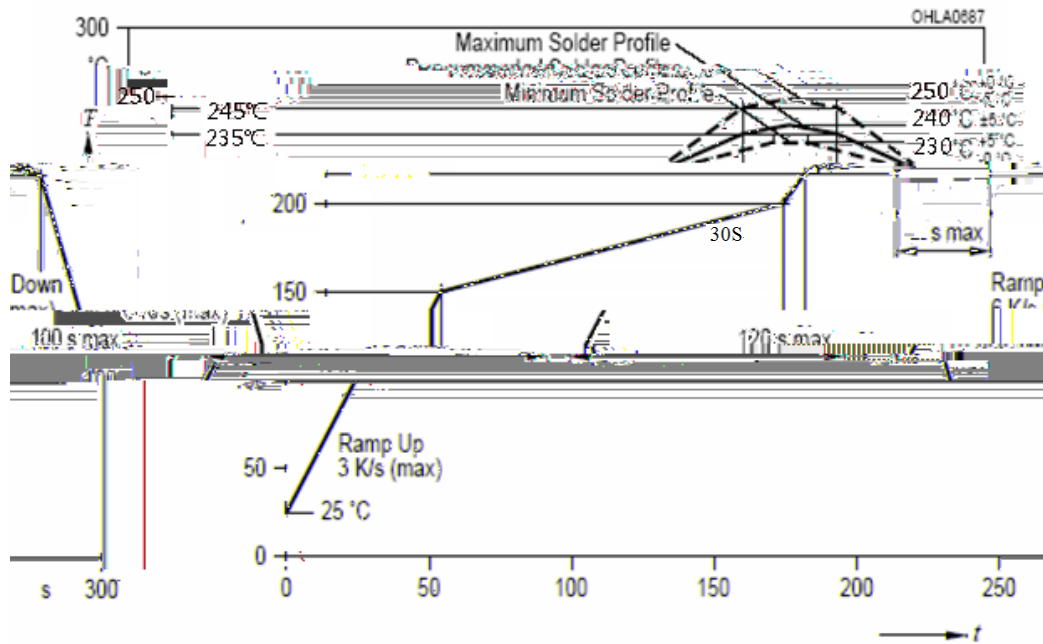


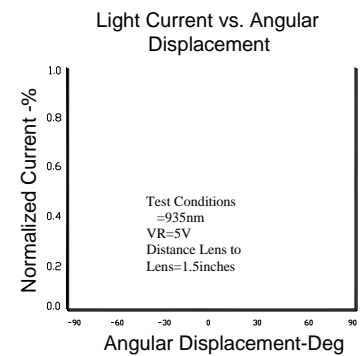
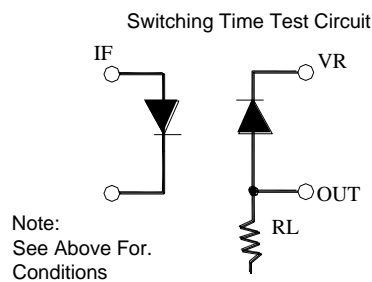
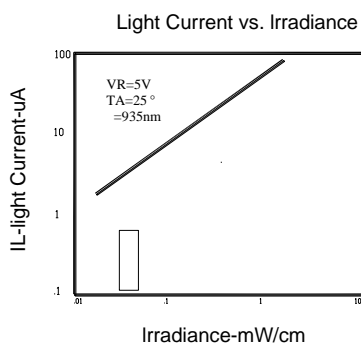
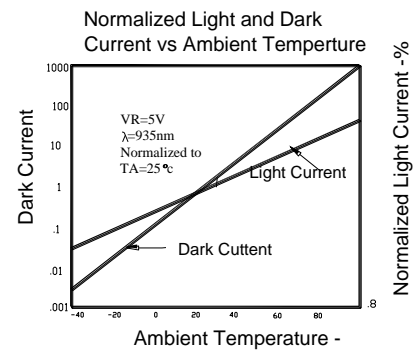
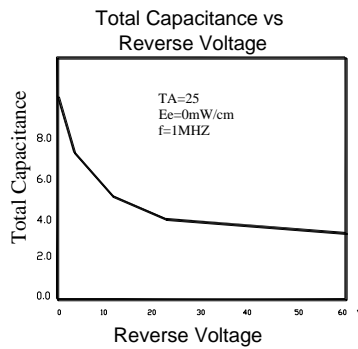
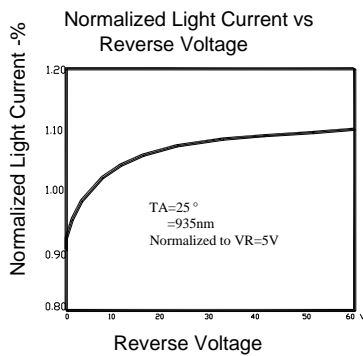
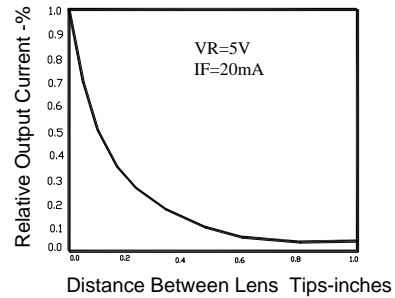


## Suggest IR Reflow Condition For Lead Free:



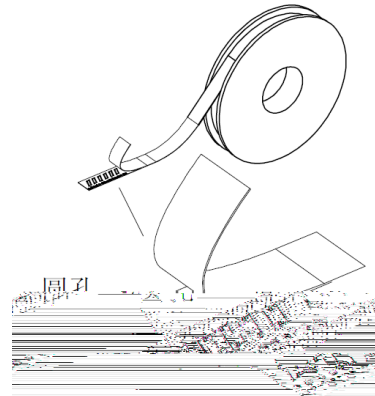
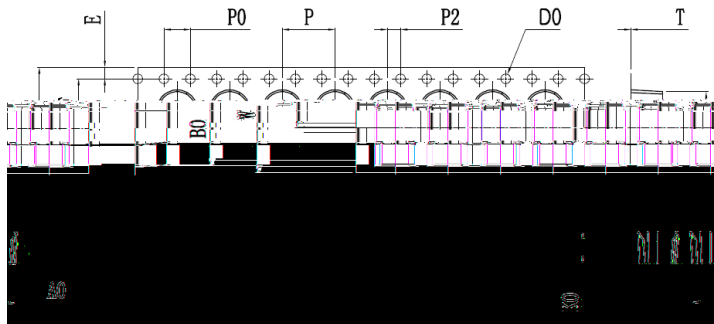
## Typical Electrical / Optical Characteristics Curves (25°C Ambient Temperature Unless Otherwise Noted)

Coupling Characteristics

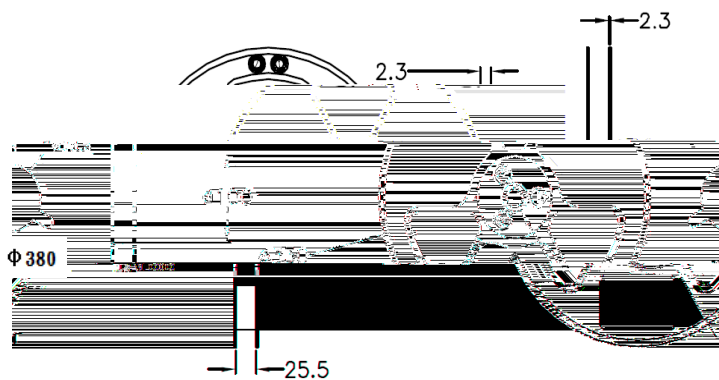


## Package

### Package Dimensions



△ TYPICAL PERFORMANCES



Item	Specification	
	Minum	Maximum
W	15.97	16.3
P	7.9	8.1
E	1.65	1.85
F	7.4	7.6
D	1.5	1.6
P0	3.9	4.1
P0x10	39.8	40.2
P2	1.9	2.1
A0	5.2	5.4
B0	10.6	10.8
K0	4.8	5.0

### Notes:

1. All dimensions in millimeters.
2. All dimensions meet EIA-481-C requirements.
3. Cover tape by a heat sealing manner.

LIGH



<b>Part No.</b>	<b>LG-05PD4D94K-003B-B-T</b>	<b>Page</b>	<b>8 of 8</b>
-----------------	------------------------------	-------------	---------------